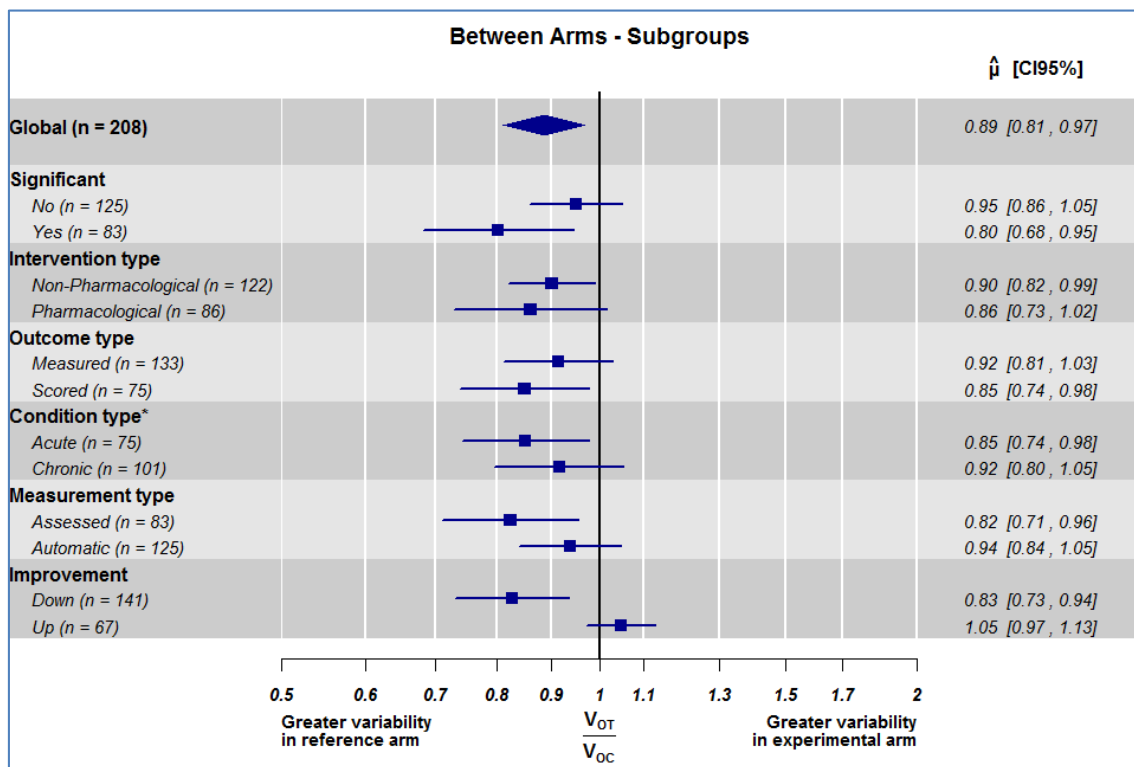


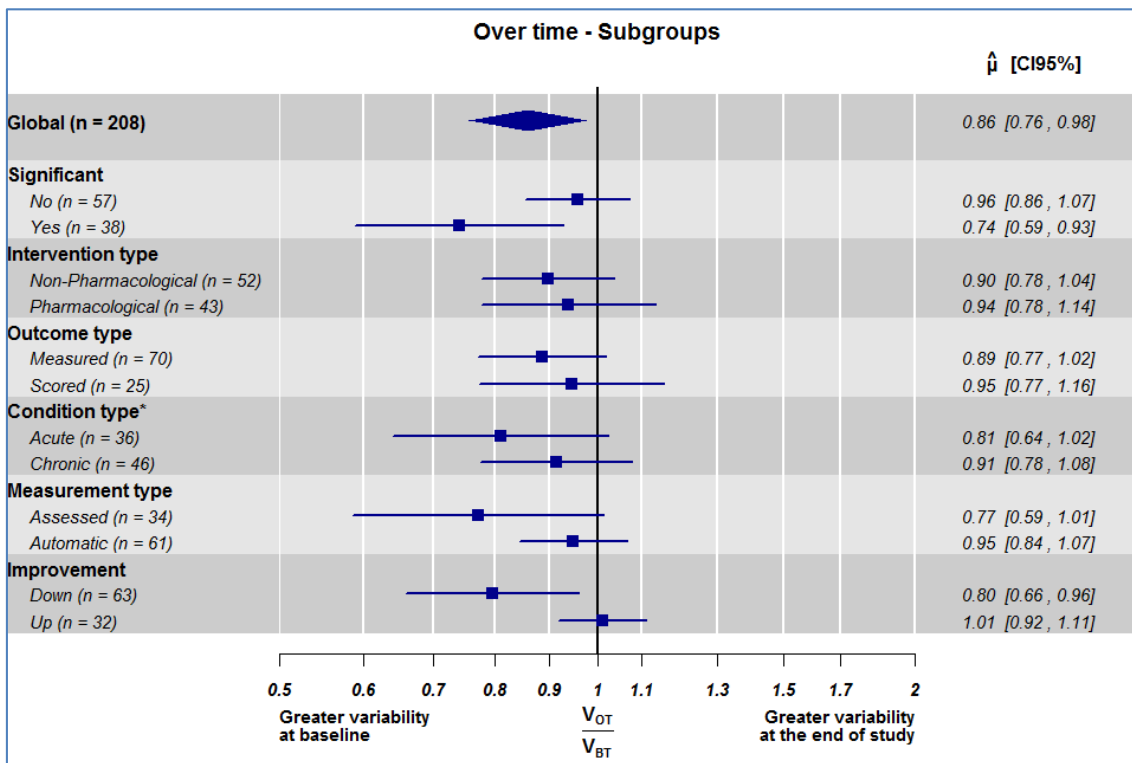
**Figure S3. 95% confidence intervals for subgroup analyses on between-arm comparisons.** For all data and each subgroup, the figure represents the 95% confidence intervals for the estimated outcome (O) variance ratio between Treated (T) and Controls (C), after being adjusted by baseline discrepancies through the *rma* function (Model 3 of Table S4). X-axis is in log scale.

\*32 studies were performed with healthy participants, i.e., those without any particular illness.



**Figure S4. 95% confidence intervals for subgroup analyses on over-time comparisons** (95 patients). For all Treated (T) arms and each subgroup within these arms, the figure represents the 95% confidence intervals for the estimated variance ratio between Outcome (O) and Baseline (B), after being adjusted by change over time ratio in the control group through the *rma* function (Model 6 of Table S4). X-axis is in log scale.

\*13 studies were performed with healthy participants, i.e., those without any particular illness.



**Figure S5. 95% confidence intervals for subgroup analyses on over-time comparison between arms.** For all data and each subgroup, the figure represents the 95% confidence intervals for the estimated outcome (O) variance ratio between Treated (T) and Controls (C) (Model 7 of Table S4). X-axis is in log scale.

\*32 studies were performed with healthy participants, i.e., those without any particular illness.

